

Village Duplex

70 East 10th Street
New York, New York

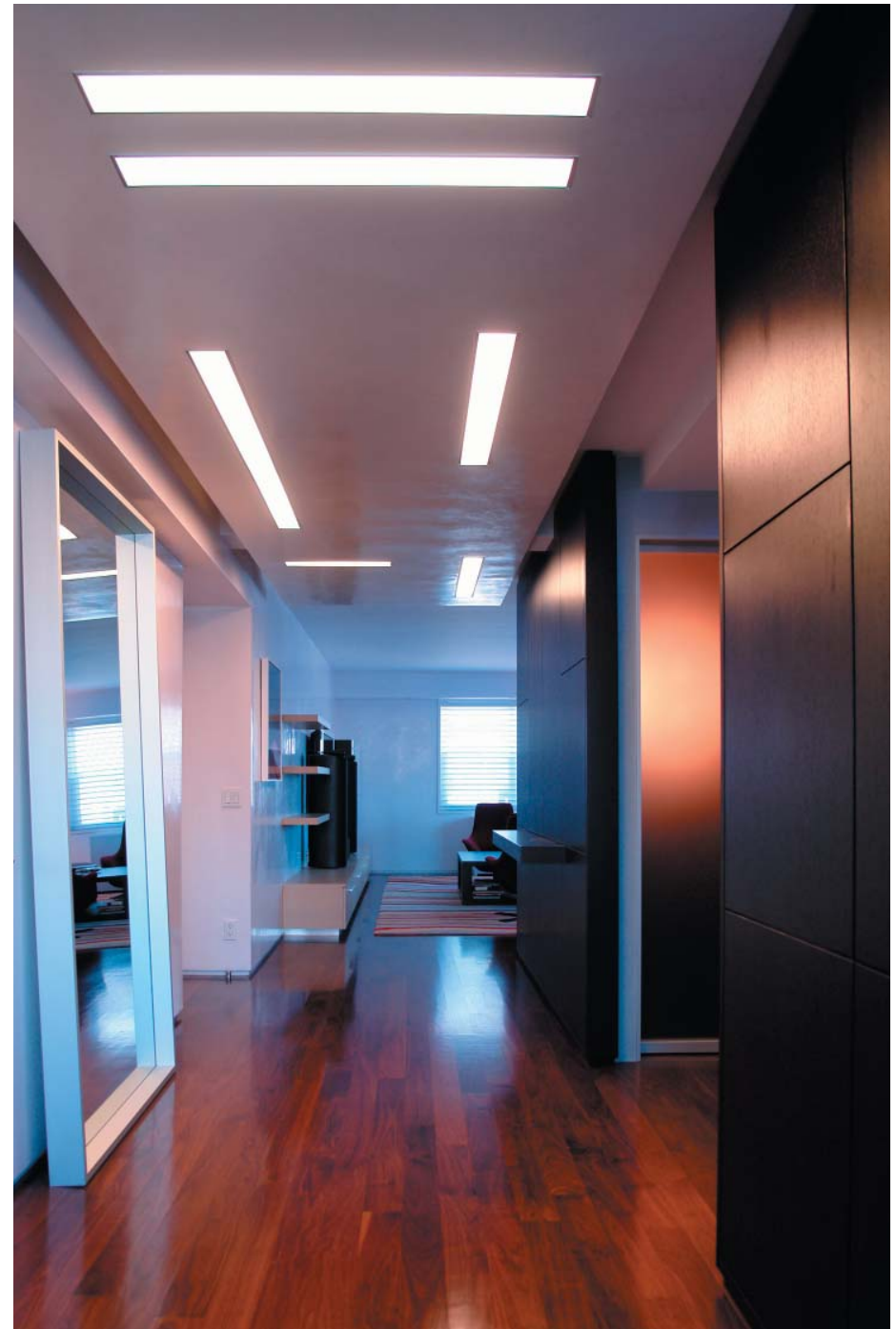
Design – Studio ST
Decorating – Axis Mundi
Architect of record – Matt Markowitz
MEP – Mottola Rini Engineers
Project Manager – J M Contracting
Woodwork – Woodweave Furniture
AV – Stereo Exchange
Metal work – Aileron Design
Venetian Plaster – Jeff Leonard
Area - 2600 sq.ft.
Cost - \$1,100,000
Complete - February 2006

The project is a 2200 sq.ft. duplex apartment in New York's Greenwich Village. Although the unit came with incredible views of the city it also presented some difficult design challenges. Typical of postwar high-rises, the apartment had 8 foot concrete slab ceilings, small generic bathrooms, a miniscule kitchen, and linoleum floors.

The overarching design goal was to create a series of differentiated spaces, each with its own atmosphere, that added up to a coherent whole. During the design process we used computer-generated renderings to explore various design possibilities as well as traditional paper and wood models for quick studies of various areas such as the stair and the living room wet bar.

The principal design element on the lower level (the 19th floor) is a new glass and metal conservatory. The exterior wall of the small kitchen was removed to join the kitchen to the conservatory, making a dramatic, yet comfortable space for eating and entertaining. Additionally, a hot-rolled steel TV wall with a slot window connects the conservatory with the formal dining room, maximizing the conservatory's abundant natural light and spectacular views.

Other design elements on this floor include a ruby red lush powder room, a dramatic entry hallway with a wenge wood wall and floating ceiling and a living room wet bar made of wood and glass .



entry hall

kitchen
dining room
conservatory
living room

